

# VELAN HERMETICALLY SEALED UNIVERSAL STEAM TRAP

Type UST Stainless Steel Swivel Connector Trap With Air Vent, Check Valve, Strainer & Self-Aligning Precision Ball Valve

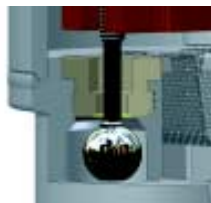
Type UST

SHELL : ANSI CLASS 300



## DESIGN FEATURE

- **Hermetically sealed body**  
Seal welded body contains all operating parts.
- **Positive Closing**  
The bimetallic element is a function of the saturated steam curve and it's sensitivity to the temperature change assures an immediate reaction to both steam and condensate for the entire pressure range. At saturated temperature the valve is closed.
- **All-position installation (Swivel 360 Deg)**  
Simplifies piping layout for easy plant standardization.
- **Self-aligning precision ball valve**  
Single free-floating stainless steel hardened Rc 58 min. ball valve.
- **Valve seat Stellite**  
All Velan valve seats are Stellite faced to increase their resistance to the high degree of wear through velocity of flow, dirt and scale.
- **Air venting - good discharge capacity**  
Air and cold condensate is discharged through a full orifice efficiently ensuring fast warm-up of equipment.
- **Positive condensate drainage**  
For process work.
- **Check valve operation**  
The main valve acts as a check valve preventing back flow.
- **Guaranteed against water hammer**  
The downstream valve acts as a release valve on the excess water pressure without damage to internal parts.
- **Integral strainer**  
An integral stainless steel strainer protects the trap operating mechanism from damage by dirt or scale. No extra fittings or installation costs are required. Free strainer area 26%. Perforation is 0.031" (0.8mm).
- **Compatible**  
With most other manufacturers trap modules.
- **Easy Removal**  
Steam trap can be removed & replaced in minutes by undoing 2-bolts and without having to disconnect any piping.
- NPT blow down plug
- Velan Connectors are available separately with Screwed and Socketweld connections



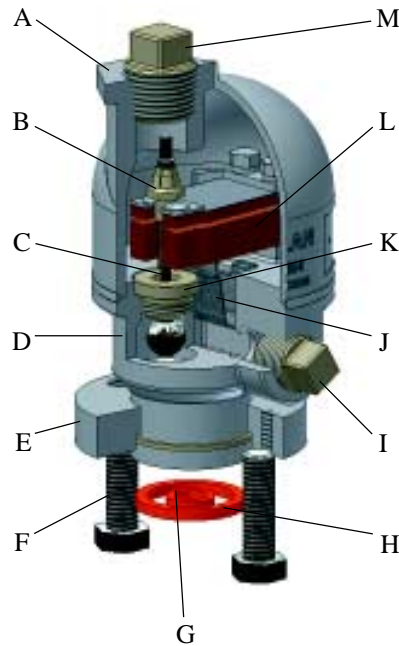
## APPLICATIONS

- **Steam tracing, line drainage and most general process applications.**

# VELAN HERMETICALLY SEALED UNIVERSAL STEAM TRAP

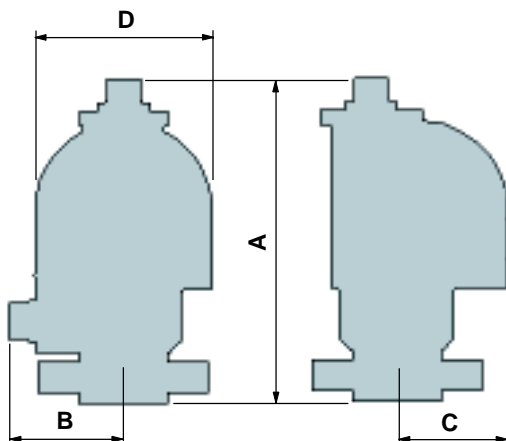
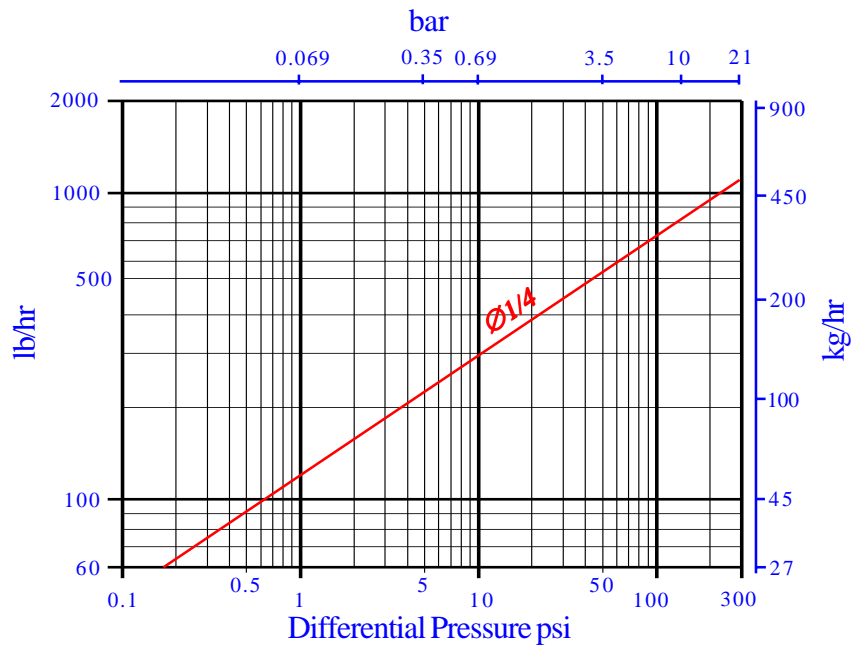
## STANDARD MATERIAL

PART	MATERIAL	
A	Cover	Stainless Steel CF8M
B	Self locking Adjustable nut	Stainless Steel
C	Stem & ball	S/S, ball valve 58Rc min.
D	Body	Stainless Steel CF8M
E	Flange	Stainless Steel F316
F	Fixing Screw	Chrom. Moly Steel B7 Electro-Plated
G	Inner Gasket	S/Steel spiral wound with graphite filler
H	Outer Gasket	S/Steel spiral wound with graphite filler
I	B/Down Plug	Carbon Steel Electro-Plated
J	Seat	Stainless Steel 316 Hardfaced (Stellite 6)
K	Strainer	Stainless Steel 304
L	Bimetal Element	Truflex GB-14
M	Plug	Carbon Steel Electro-Plated



## CAPACITY

The performance graph indicates the continuous discharge capacities of condensate per hour at various pressure differentials across the trap.



## DIMENSIONS & WEIGHT

TYPE	A Overall Length	B Center to B/down Plug	C Center to Top of Cover	D Cover Diameter	Weight lb / kg
UST	5.1/8 130	1.7/8 48	1.3/4 45	2.3/4 70	3.1/2 1.5

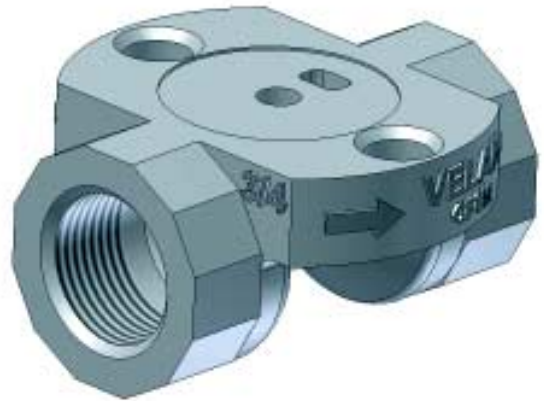
## ENGINEERING DATA

TYPE	PRESSURE RANGE psi / bar	MATERIAL	MAX TEMP °F / °C	ORIFICE in / mm	MAX CAPACITY lb/hr / kg/hr
UST	0-300 0-17	S/S CF8M	800 425	1/4 6.4	1,100 500

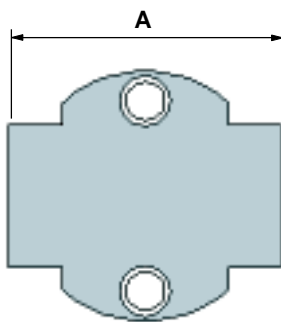
# VELAN CONNECTORS FOR HERMETICALLY SEALED UNIVERSAL STEAM TRAP

Velan Connectors are designed to be used with swivel connector steam traps.

The connector can be installed horizontally or vertically into the pipeline. The Steam Trap is attached to the connector by means of two hexagon screws and can be rotated 360 degrees to ensure the trap is in correct orientation.



## ANSI CLASS 300



### DIMENSIONS & WEIGHT

SIZE in / mm	A Face to Face	Weight lb / kg
1/2 15	2.7/16 62	1.1 0.5
3/4 20	2.7/8 73	1.2 0.55
1 25	3.1/2 89	1.9 0.86

### ENGINEERING DATA

PRESSURE RANGE psi / bar	MATERIAL	MAX TEMP °F / °C
0-300 0-17	S/S CF8M	800 425

### CONNECTIONS :

- Screwed
- Socketweld

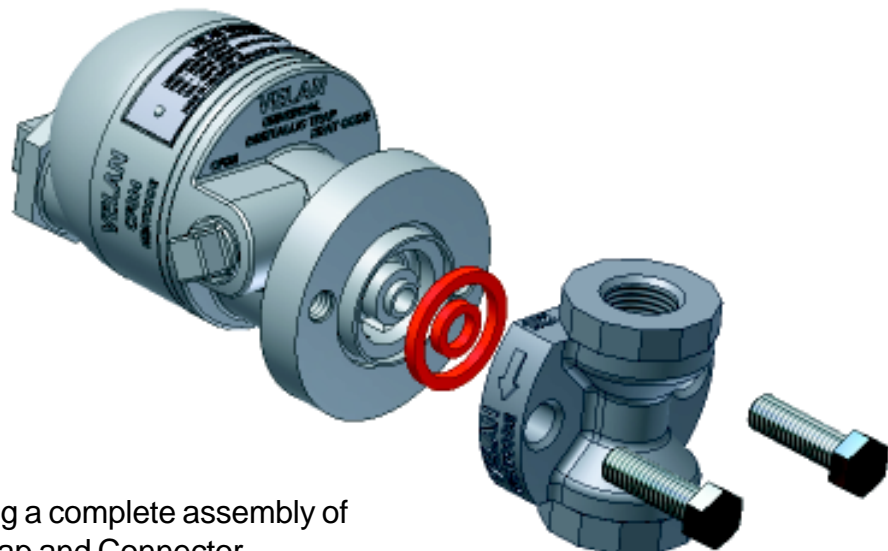


Illustration Showing a complete assembly of Universal steam trap and Connector.