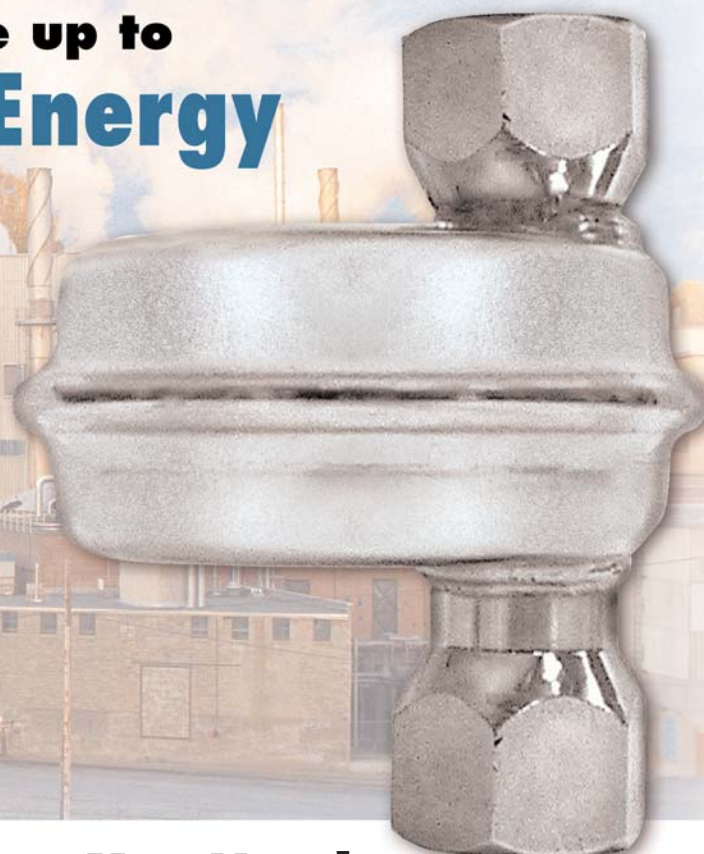


VELAN **Universal Bimetallic Steam Traps**

Turn Loss of Steam into Profits

Save up to
30% Energy



The Only One You Need for Easy Plant Standardization

The Original Stainless Steel Universal Bimetallic Steam Trap Design Features

- One type for 0-250 psi up to 2000 lb/hr capacity
- Easy plant standardization
- Can discharge below saturation temperature using up sensible heat
- Save up to 30% on energy
- Is absolutely steam tight
- Works in all positions
- Large air capacity through main valve
- Long life, Stellite seat
- Self-aligning 440c Stainless Steel (RC60) precision ball valve
- Main valve acts as check valve
- Guaranteed against waterhammer
- Opens and closes quickly
- Factory adjusted for discharge at 20°F below saturation
- Can be adjusted for lower discharge temperature
- Small in size and weight

To find your nearest Velan Steam Trap distributor, please email:
sales@velansteamtraps.com or call 1-800-860-0233

To learn more about Velan steam traps, visit us at
www.velansteamtraps.com

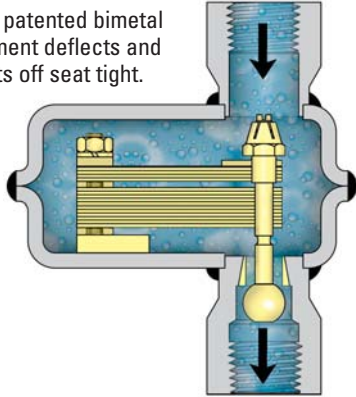
TECHNICAL DATA • PRINCIPLE OF OPERATION

A single free floating Ball Valve

1) Vents Air 2) Discharges Condensate 3) Traps Steam 4) Acts as Check Valve

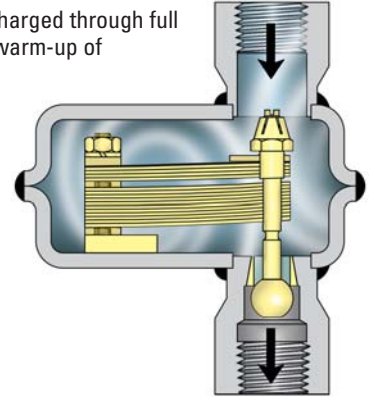
STEAM TRAPPING

The patented bimetal element deflects and shuts off seat tight.



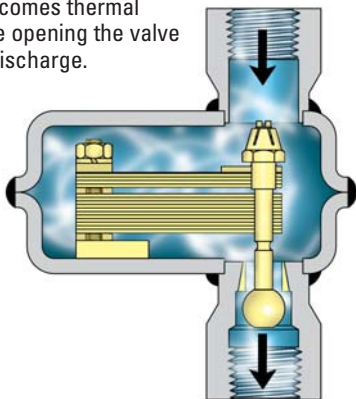
AIR VENTING

Air and cold condensate is discharged through full orifice efficiently ensuring fast warm-up of equipment.

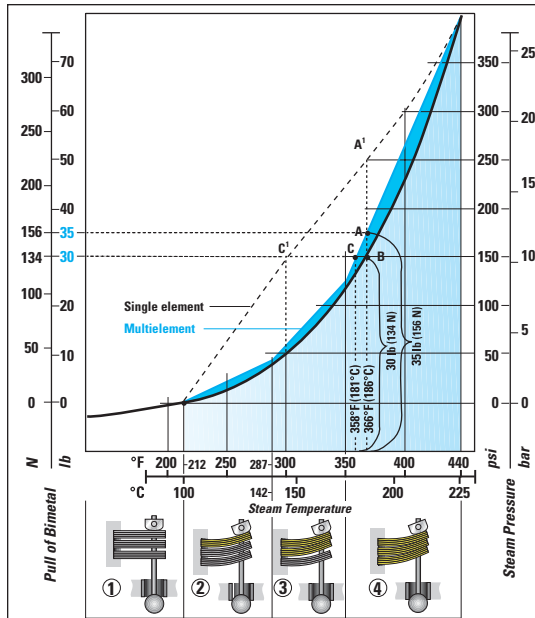


CONDENSATE DISCHARGE

Water at temperature below saturation relaxes the element and line pressure overcomes thermal force opening the valve for discharge.



PATENTED BIMETAL PRINCIPLE

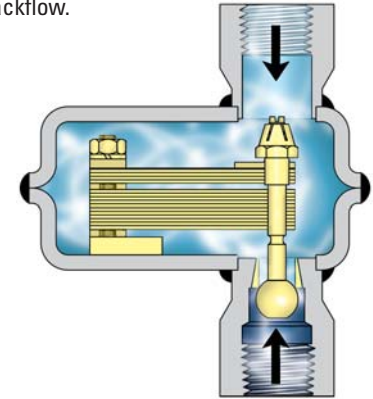


— Saturated steam curve & line pressure acting on valve
 — Mechanical pull of bimetal due to heat and arrested deflection
 A - Mechanical pull of bimetal at 150 psi (10.3 bar) and 366°F (186°C)
 B - Pressure power at 150 psi (10.3 bar) and 1/2" (12.7 mm) orifice 30 lb (134 N)
 AB - Closing force 35-30 = 5 lb (156-134=22 N)
 CB - Operating temperature differential

Staged Bimetal develops forces parallel to curve.

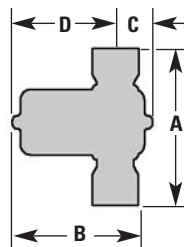
CHECK VALVE ACTION

Downstream valve shuts off the seat and prevents backflow.



STANDARD MATERIALS

PART	MATERIALS
Inlet shell	Stainless steel 304L
Outlet shell	Same as inlet shell material
Bimetal element	Truflex GB-14
Stem & ball	SS, ball valve 58 Rc min.
Seat	Stellite 6
Self locking adjustable nut	Stainless steel
Fixing screw	Stainless steel
Inlet nipple	Stainless steel 304L
Outlet nipple	Stainless steel 304L



ENGINEERING DATA

TYPE	PRESSURE RANGE psi/bar	MATERIAL	MAX. TEMP. °F/°C	ORIFICE in/mm	MAX. CAPACITY lb/h kg/h
Q250	0-250 0-17	SS 304L	500 260	3/8 9.5	2,700 1,227

DIMENSIONS & WEIGHTS

TYPE	SIZE in/mm	A Face to Face	B Overall Diameter	C Center to Bottom	D Center to Top	Weight lb/kg
Q250	1/2 15	4 102	3 1/2 89	7/8 22	2 5/8 67	2 1
	3/4 20	4 1/2 114	3 1/2 89	7/8 22	2 5/8 67	2 1

To find your nearest Velan Steam Trap distributor, please email:
sales@velansteamtraps.com or call 1-800-860-0233

To learn more about Velan steam traps, visit us at
www.velansteamtraps.com