

# VELAN HERMETICALLY SEALED STEAM TRAP

**Type Q250 Stainless Steel Traps for All Position Installation With Air Vent, Check Valve & Self-Aligning Precision Ball Valve**

**Type Q250**



**SHELL : ANSI CLASS 300**

## DESIGN FEATURE

- **Hermetically sealed body**  
Seal welded body contains all operating parts.
- **Positive Closing**  
The bimetallic element is a function of the saturated steam curve and it's sensitivity to the temperature change assures an immediate reaction to both steam and condensate for the entire pressure range. At saturated temperature the valve is closed.
- **All-position installation**  
Simplifies piping layout for easy plant standardization.
- **Self-aligning precision ball valve**  
Single free-floating stainless steel hardened Rc 58 min. ball valve.
- **Valve seat Stellite**  
All Velan valve seats are Stellite faced to increase their resistance to the high degree of wear through velocity of flow, dirt and scale.
- **Air venting - good discharge capacity**  
Air and cold condensate is discharged through a full orifice efficiently ensuring fast warm-up of equipment.
- **Check valve operation**  
The main valve acts as a check valve preventing back flow.
- **Positive condensate drainage**  
For process work.
- **Guaranteed against water hammer**  
The downstream valve acts as a release valve on the excess water pressure without damage to internal parts.
- **Freezeproof installation**  
Velan traps do not require a reservoir of priming water in the body to operate. When installed vertically with inlet on top, they drain completely when cold, and are freezeproof without insulation.



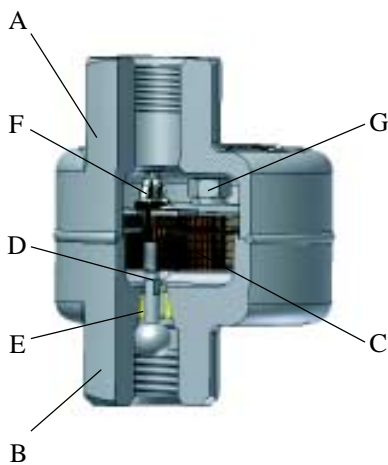
## APPLICATIONS

- **Steam tracing, line drainage and most general process applications.**

# VELAN HERMETICALLY SEALED STEAM TRAP

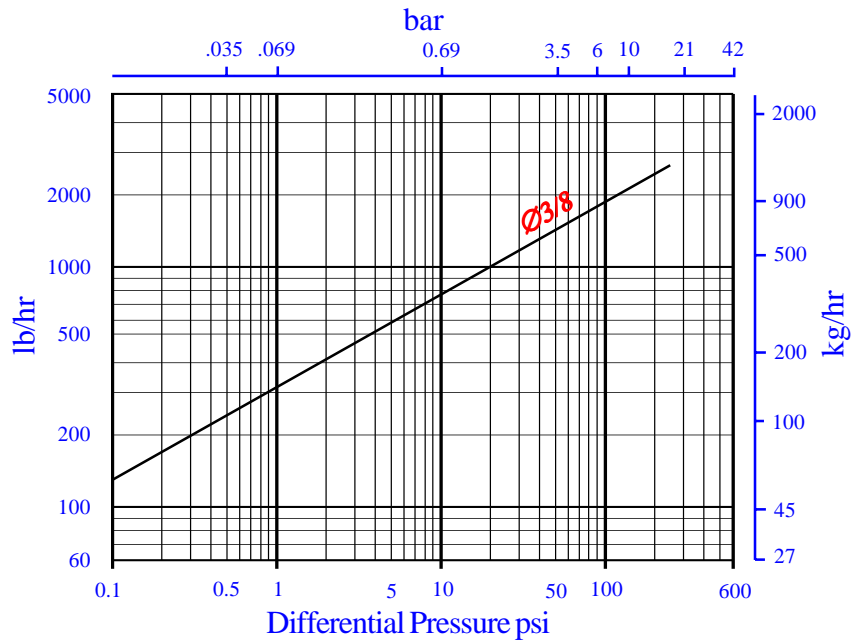
## STANDARD MATERIAL

PART	MATERIAL
A	Inlet shell
B	Outlet shell
C	Bimetal element
D	Stem & ball
E	Seat
F	Self locking Adjustable nut
G	Fixing screw



## CAPACITY

The performance graph indicates the continuous discharge capacities of condensate per hour at various pressure differentials across the trap.



Type Q250

You need **19** types of hermetically sealed stainless steel inverted bucket steam traps to cover the range of this **1** Velan Steam Trap for 0-250 psi (0-17 bar) and 2000 lb/hr (907 kg/hr) capacity

## SIMPLE PRINCIPLE OF OPERATION

A single free-floating ball valve :

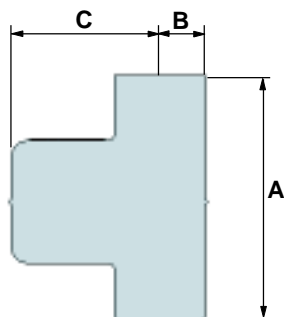
- Vents air.
- Discharges condensate.
- Traps steam.
- Acts as a check valve.

## ENGINEERING DATA

TYPE	PRESSURE RANGE psi / bar	MATERIAL	MAX TEMP °F / °C	ORIFICE in / mm	MAX CAPACITY lb/hr / kg/hr
Q250	0-250 0-17	S/S CF8M	500 260	3/8 9.5	2,700 1,227

## CONNECTIONS :

- Screwed
- Socketweld



## DIMENSIONS & WEIGHT

TYPE	SIZE in / mm	A Face to Face	B Center to Bottom	C Center to Top	Weight lb / kg
Q250	1/2 15	4	3/4 19	2.1/2 64	3.1/2 1.5
	3/4 20	102			